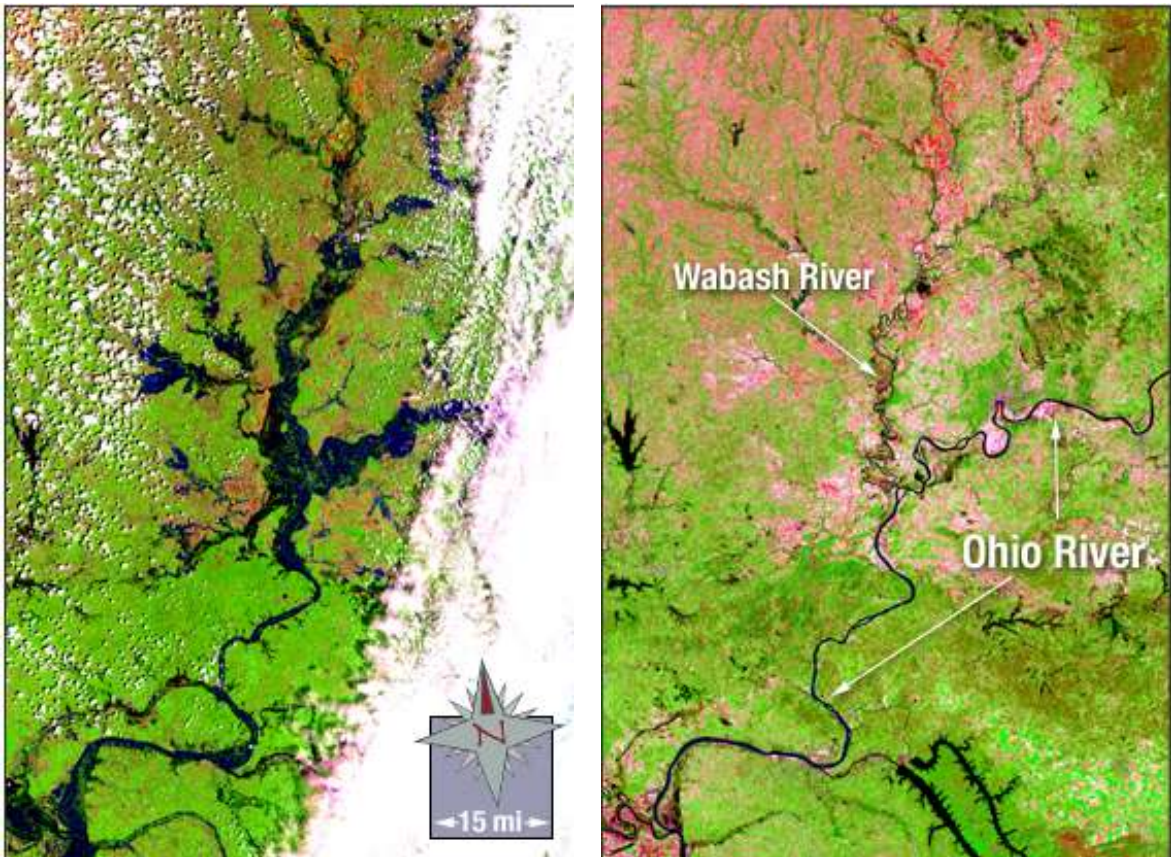


REMOTE SENSING (C) SOUTHLAND INVITATIONAL TOURNAMENT 2012

IMAGE A

One of these images was taken in April 2010 and the other was taken in May 2011. The May picture was taken after the Army Corps of Engineers opened a levee at the confluence of the Ohio and Mississippi rivers to divert floodwaters from Cairo, Illinois.



REMOTE SENSING (C) SOUTHLAND INVITATIONAL TOURNAMENT 2012

IMAGE B

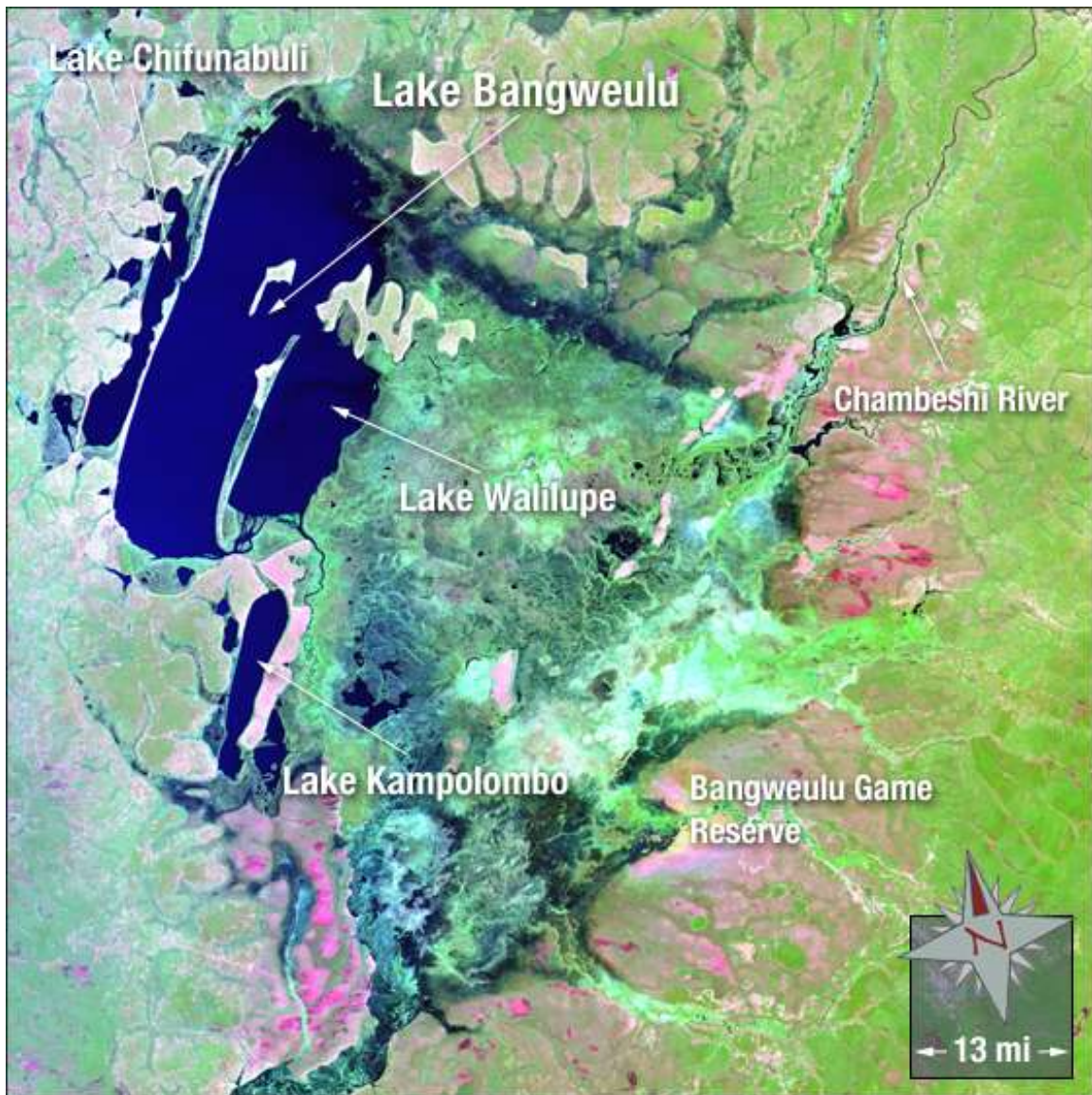
The left image is New Orleans in April of 2000. The right image is New Orleans in August of 2005. The image was acquired using Landsat 7's ETM+ bands 2, 4, and 7



REMOTE SENSING (C) SOUTHLAND INVITATIONAL TOURNAMENT 2012

IMAGE C

This is a Landsat 5 image of the Bangweulu wetlands system in Zambia, taken in 2009. The system covers roughly the size of Connecticut.



REMOTE SENSING (C) SOUTHLAND INVITATIONAL TOURNAMENT 2012

IMAGE D

This is Cyprus.



REMOTE SENSING (C) SOUTHLAND INVITATIONAL TOURNAMENT 2012

IMAGE E

This is a Landsat 7 image of French Polynesia acquired in 2000. These islands are part of the largest chain of atolls in the world.

